

Driveway to the N. Hobson side of DHEC will be closed next week. Lane closure on the east side will be present throughout the week. See page 4.

Intermittent flagging will be present Monday - Friday (2/24/25 - 2/28/25) for milling and paving operations. Traffic will be shifted to the far east lane. See pages 5 & 6.

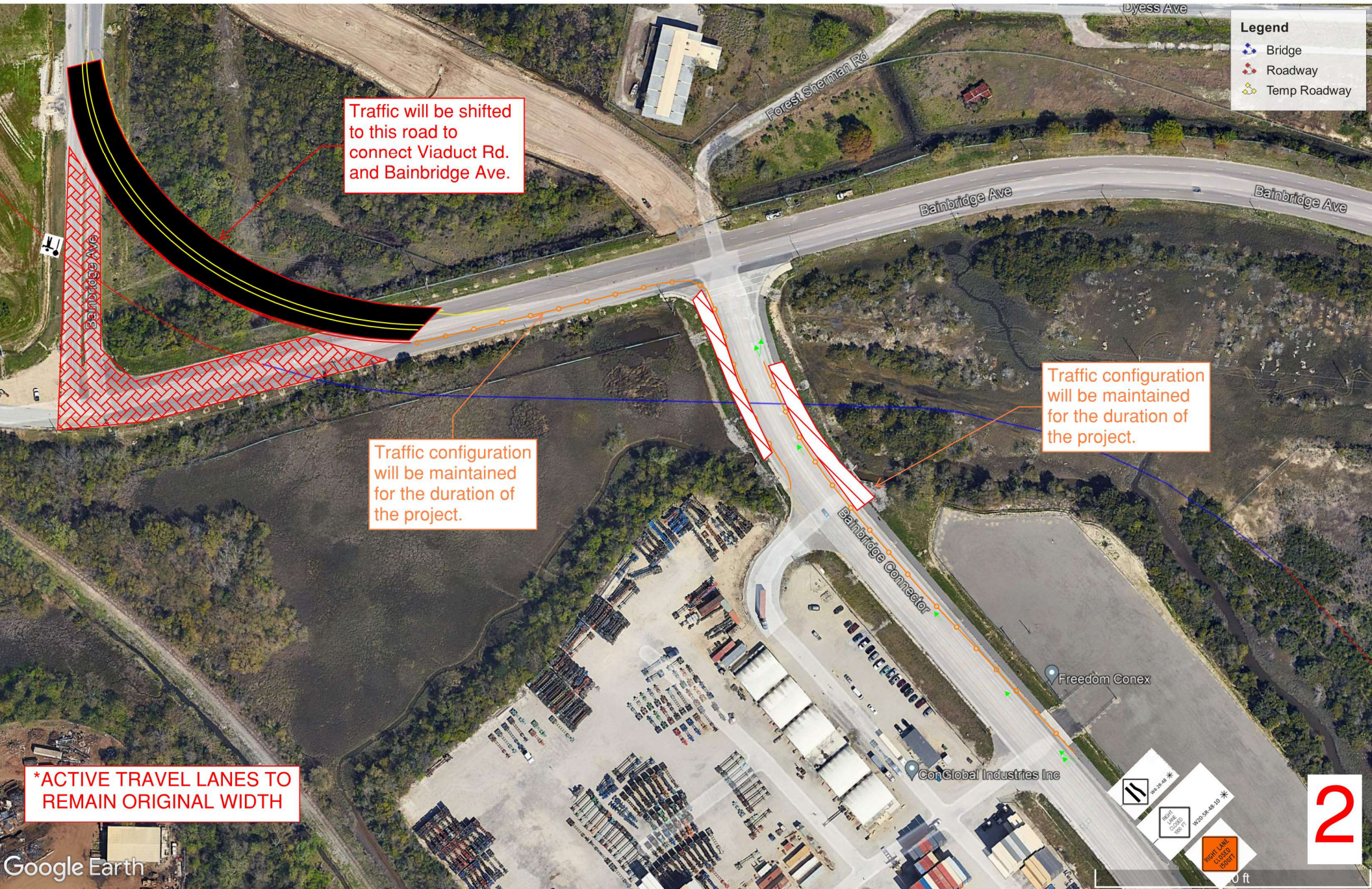
Traffic will be shifted to the new temporary road connecting Viaduct Rd. to Bainbridge Ave. (Page 2)

The outside lanes on Bainbridge Connector will be closed off for the remainder of the project duration. (Page 2)

Construction at Spruill / Cosgrove. See Phase 1 details on page 3.

Detour Route

All driveways along N. Hobson to remain open during construction



**Legend**

- Bridge
- Roadway
- Temp Roadway

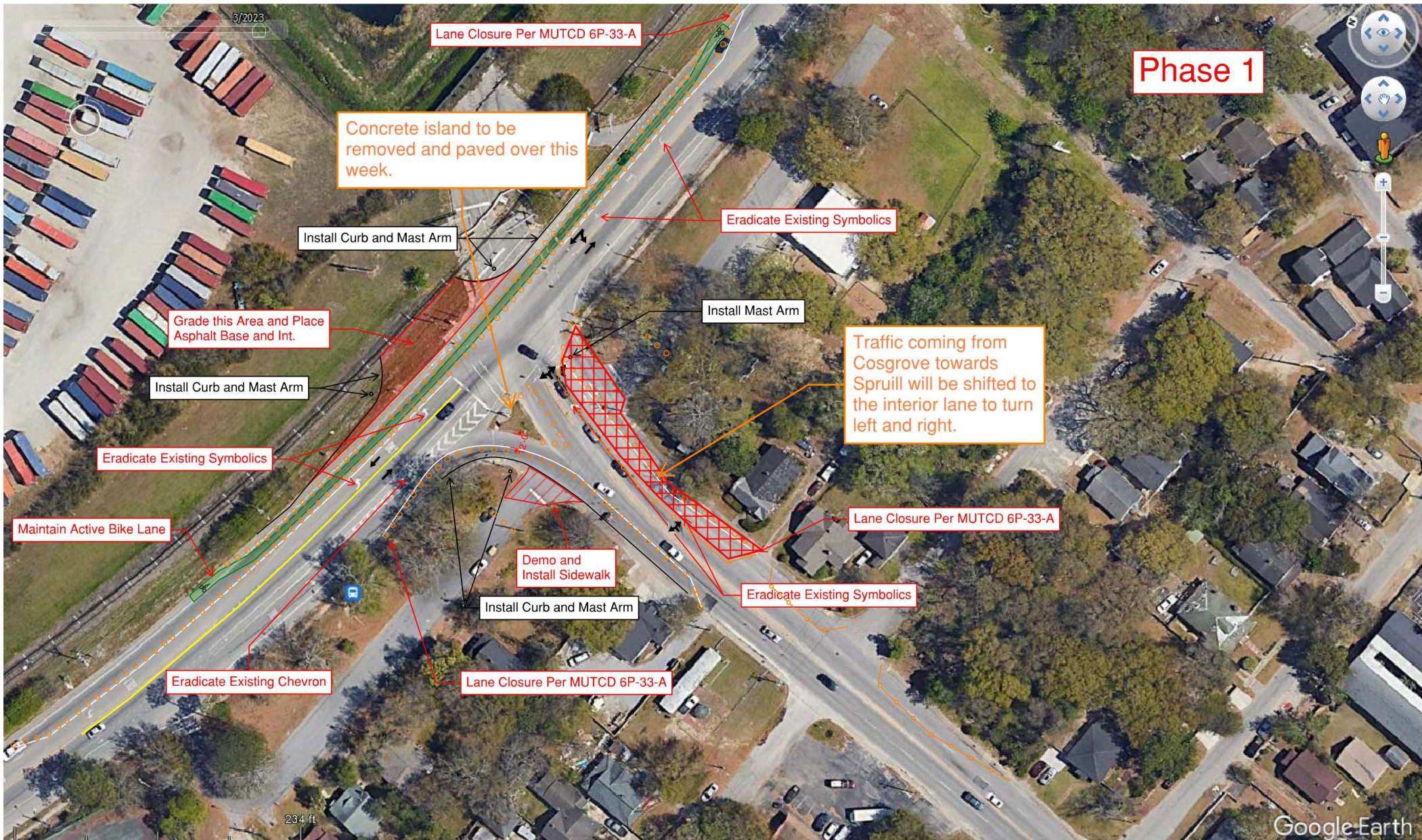
Traffic will be shifted to this road to connect Viaduct Rd. and Bainbridge Ave.

Traffic configuration will be maintained for the duration of the project.

Traffic configuration will be maintained for the duration of the project.

**\*ACTIVE TRAVEL LANES TO REMAIN ORIGINAL WIDTH**





# Phase 1





Intermittent flagging operations will be present for milling and paving on Monday - Friday (2/24/25 - 2/28/25)

Flagger

Flagger

Image Landsat / Copernicus



Intermittent flagging operations will be present for milling and paving on Monday - Friday (2/24/25 - 2/28/25)

Flagger

Flagger