

**McMillan Ave.**

**N. Hobson Ave.**

**Spruill Ave.**

**Stromboli Ave.**

**Bainbridge Connector**

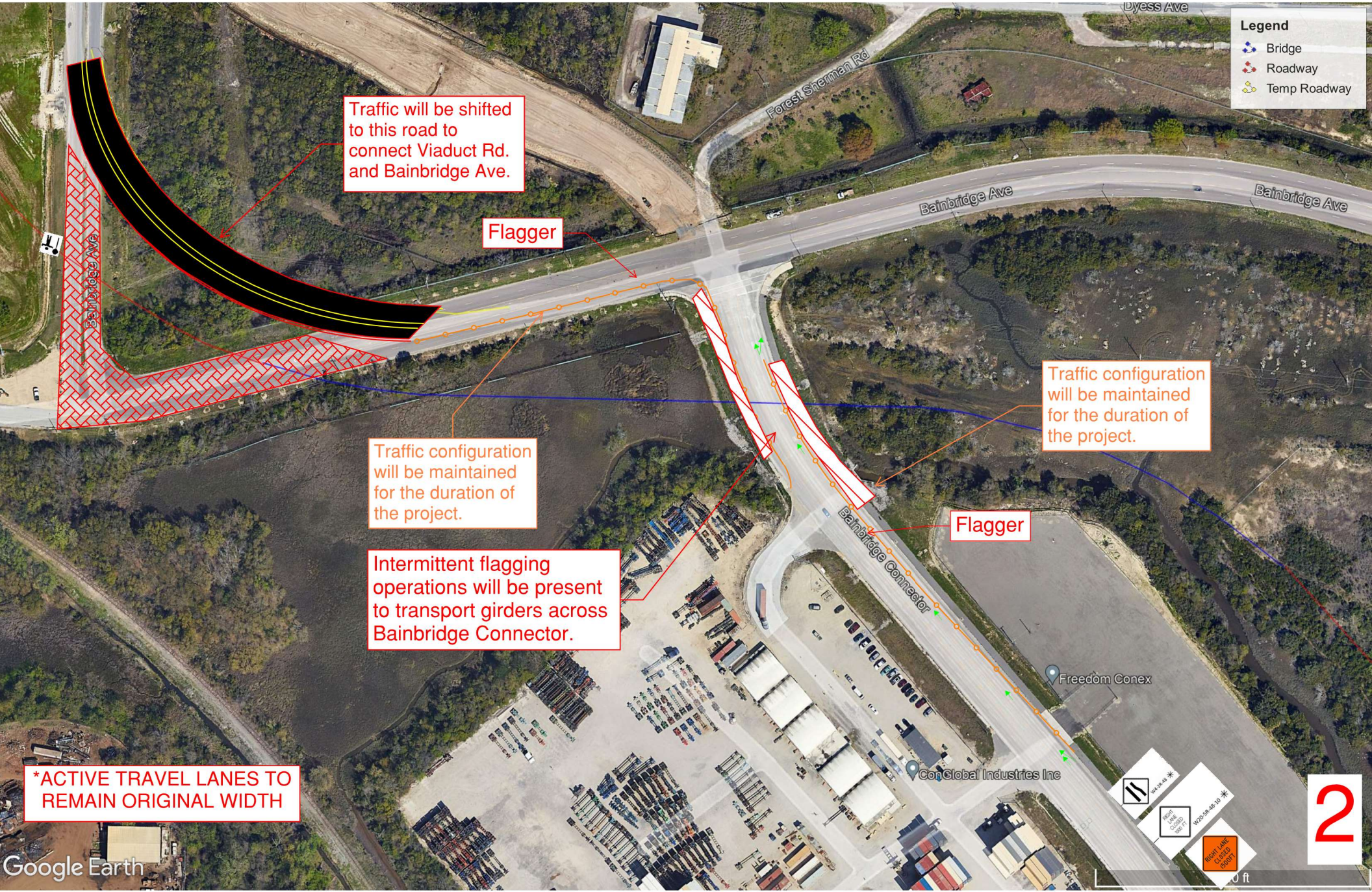
Road closure at Viaduct and N. Hobson on 4/12/25 - 4/14/25. See Page 5 for details.

Construction at Spruill / Cosgrove. See Phase 1 details on page 3.

Detour Route

The outside lanes on Bainbridge Connector closed off for the remainder of the project duration. Intermittent flagging will be present to set girders. (Page 2)

All driveways along N. Hobson to remain open during construction



**Legend**

- Bridge
- Roadway
- Temp Roadway

Traffic will be shifted to this road to connect Viaduct Rd. and Bainbridge Ave.

Flagger

Traffic configuration will be maintained for the duration of the project.

Intermittent flagging operations will be present to transport girders across Bainbridge Connector.

Traffic configuration will be maintained for the duration of the project.

Flagger

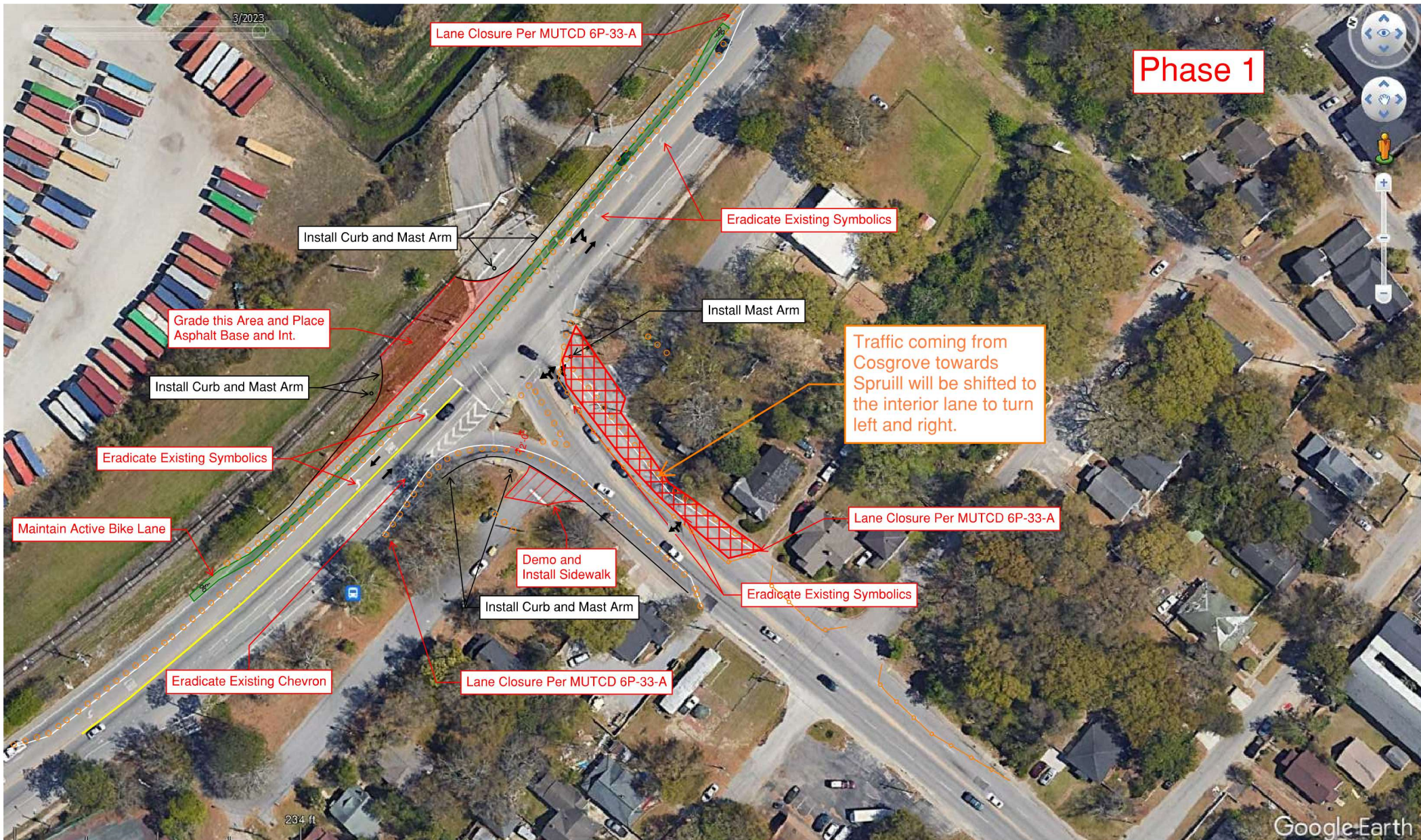
**\*ACTIVE TRAVEL LANES TO REMAIN ORIGINAL WIDTH**

Scale: 0 to 100 ft

North Arrow

Right Lane Closed Sign

Right Lane Closed Sign



# Phase 1





**\*\* Access between N. Hobson Ave. and Bainbridge Ave./Bainbridge Connector will be closed at the times indicated above to complete construction of the new roadway alignment. Motorists may use the detour route below. \*\***

