



REQUEST FOR QUOTES RFQ #CHS072423 – Surplus Chassis Sale

South Carolina State Ports Authority

200 Ports Authority Drive
Mount Pleasant, SC 29466
Phone 843-843-7052

Request for Quotes ID

CHS072423

Date

07/24/2023

Closing Date for Quotes: **Open until acceptable quote(s) received**

Request for Quotes – Scope

The South Carolina State Ports Authority (“SCPA”), an instrumentality of the State of South Carolina, is selling surplus container chassis. The SCPA is requesting quotes (“Quote”) from potential Buyers to purchase 2,310 existing surplus chassis (“Chassis”) from the SCPA. Quotes are to be submitted on the Quote Sheet included in this Request for Quotes (“RFQ”).

SCPA Surplus Chassis for Sale – Product Description

- Description: SCPA is requesting Quotes for Buyer(s) to purchase the following Chassis from the SCPA:
 - 40’ Gooseneck Chassis: quantity = 2,310
- These Chassis were recently purchased from Dorsey Intermodal, a subsidiary of Pitts Enterprises, in 2022. Chassis specifications are included on Sheet 4 of this RFQ, and Chassis photos are included on Sheets 5 & 6 of this RFQ. Chassis are in new condition and have not been used.
- Chassis are currently located at SCPA’s Hugh Leatherman Terminal (“HLT”) 1500 Port Access Road, North Charleston, South Carolina 29405
- The Chassis are in bonded storage at HLT and are required to be exported from the USA. These Chassis may not be admitted into the commerce in the United States of America (“USA”) unless in strict accordance and compliance with applicable laws, including antidumping and countervailing duty orders A-570-135 and C-570-136. The Buyer who purchases these Chassis must immediately and promptly export the Chassis out of the USA. Time is of the essence for the removal of the Chassis from HLT.
- All Chassis will be made available in bundles of five (5) with bottom chassis wheels down. 347 bundles are strapped, and 115 are not (see photos on Sheet 6). It is Buyer’s responsibility to properly and securely prepare and package Chassis for export.



REQUEST FOR QUOTES RFQ #CHS072423 – Surplus Chassis Sale

Submitting a Quote – Instructions

- Buyer is to complete and submit the Quote Sheet ("Quote Sheet") included with this RFQ. The Quote Sheet provides lines for Buyers to indicate the quantity of Chassis the Buyer will purchase, unit price, total purchase price, and proposed delivery schedule.
- Buyer's Quote shall include all export fees, taxes, duties, customs clearance, freight, loading costs, unloading costs, stevedoring fees, and any other costs and expenses necessary to promptly remove Chassis from HLT and the USA at Buyer's sole cost and expense. SCPA is not responsible for any costs following acceptance of the Quote.
- By submitting a signed Buyer Quote Sheet, the Buyer acknowledges that it has reviewed, understands, and agrees to the Other Terms and Conditions of this RFQ.
- Buyer shall submit questions via email to Bob Mitchell at: bmitchell@scspa.com. Please include the RFQ number in the title of your email.
- Buyer shall submit its Quote via email to Bob Mitchell at: bmitchell@scspa.com. Please include the RFQ number in the title of your email.
- Buyer Award: The SCPA will make the sale of the Chassis to either a single Buyer or multiple Buyers, depending on the quantity of Chassis Buyer proposes to purchase and the purchase price.

This RFQ is a solicitation for Quotes only. Neither the issuance of this RFQ nor the submission of a responsive Quote shall be binding on SCPA. SCPA, in its sole and absolute discretion, reserves the right to accept or reject any or all Quotes or to cancel this RFQ or any portion of this RFQ for any reason or no reason. No binding agreement shall exist for the provision of any Chassis unless and until a definitive purchasing/sale agreement has been executed by both SCPA and the selected Buyer(s) that includes the Other Terms and Conditions. SCPA will not be liable under any circumstances for any expenses incurred by any Buyer or proposed Buyer in connection with the RFQ, Quote submission, or selection process.

This is NOT AN ORDER

All returned Quotes and related documents must be identified with our Request for Quote ID Number listed above.

A handwritten signature in blue ink, appearing to read "Robert Mitchell", written over a horizontal line.

Authorized Signature



**REQUEST FOR QUOTES
RFQ #CHS072423 – Surplus Chassis Sale**

SOUTH CAROLINA STATE PORTS AUTHORITY

Other Terms and Conditions

In addition to the terms of the RFQ contained herein, the purchase of Chassis by Buyer from the SCPA shall be subject to and conditioned upon certain terms and conditions that shall be included in any purchase/sale agreement between Buyer and SCPA. Such terms and conditions relate to indemnification, warranty provisions, risk assumption, compliance with all applicable laws and regulations, liability, arbitration, governing law, and reservation of rights. Additional information regarding terms and conditions may be provided upon request.

Please note that the Chassis are currently held in bonded storage at HLT, are being sold as-is, and must be exported from the USA in a sale. Title to the Chassis shall pass from SCPA to the Buyer upon export.

[Balance of page intentionally left blank. End of Other Terms and Conditions.]

REQUEST FOR QUOTES

RFQ #CHS072423 – Surplus Chassis Sale

CHASSIS SPECIFICATION

The offered Chassis are offered AS IS and WHERE IS with the following representative specifications:

THACO SPECIAL VEHICLES MANUFACTURING LIMITED COMPANY

Add: Chu Lai-Truong Hai Automotive Industrial Zone Tam Hiep Commune-Nui Thanh District-Quang Nam Province

SCPA 40' GN Specification

1. Model: CTSV/2AS4004IUS

This chassis is designed for transporting a 40' ISO container

This chassis meets all DOT, AAR, ANSI, TOFC, FMVSS, SAE and TTMA specifications.

2. General

Overall Length:	40'-8" (Excluding dock bumpers)
Overall Width:	96"
Overall Height:	58"
Fifth Wheel Height:	48 ± 1"
Rear Deck Height:	48 ± 1"
Kingpin Location:	30" (From the rear face of the front bolster)
Landing Gear Location:	100" (From the kingpin center)
Axle Spread:	49"
Tare Weight:	6,600 lbs ± 2%
Payload:	67,200 lbs (30,480kgs)

3. Steel Structure & Components

Main beam:	W12@19lb/ft hot-rolled H-beam, ASTM A572 Grade 50 or equivalent
Cross member:	3/16" thick x 3" wide x 9" deep channel with profiled bar type diagonal brace.
GN member:	5" deep x 4" wide fabricated H-beam, 1/2" thick flanges and 1/4" thick web.
Upper Coupler:	1/4" pick up plate with JOST 2" diameter square type king pin per SAE standard.
Front Bolster:	8" wide x 10" high x 1/4" thick open section, with 3-1/2" chamfer in full length for gathering container in operation. 7-way receptacle and glad hands are in the center of front bolster. Casted corner caps (TOCA 905-940-000RS/CS).
Rear Bolster:	8" wide x 3/8" thick top plate with 7" wide x 6-5/8" deep x 1/4" thick "U" type bottom channel.
Rear Bumper:	4" x 4" square tube step with taper "H" section vertical member. Bar is welded to uprights and main beam.
License plate bracket	Extending from rear bolster within envelope of ICC bumper. Plate is to contain rear cluster lights, rear fleet number & license plate.
Front Locking pin:	TOCA 905-910-000-LH/RH
Rear twist Lock:	TOCA 905-123-000-90-LH/RH
Landing Gear:	JOST A440 Magnum with solid axle shoes; 62,500lbs capacity, 2-speed 17" travel with Low profile sand shoes. Crank handle is located on the driver's side of the chassis, (10-year warranty). Pre-painted BLUE RAL5010 color.
Suspension:	AXN mechanical tandem suspension, overslung configuration with high-arch 3-leaf spring (354-00)
Axles:	AXN 5" round axles with 22500lb capacity; 71.5" track, Q+ 16.5"X7" 4707Q brake, (BLUE RAL5010 color) 28 spline, HALDEX 5.5" automatic slack adjusters. Reserved PSI interface; Heat Sensing Labels. Axle Installation orientation: 270 degrees FRONT, chambers UP (1 abs ready front, 1 non abs rear per unit).
Wheel end:	AXN Hub & Drum Assembly P/N H30-0647BFNTZ/H30-0647BFNZ, STEMCO 358-4009 Integrated Sentinel Grease Hub Cap, STEMCO seals and bearings. Spindle nut: STEMCO Zip-Torq P/N 400-4743. (5-year warranty wheelend).
Lubricant:	CITGO SynDurance 460 NLGI 00 grease lubricant.
Wheels:	JINGU 22.5 x 8.25 10-stud hub-piloted wheels with 5 hand holes and with TR572 valve stem. Pre-painted white color.
Tires:	WESTLAKE 11R22.5-14PR tubeless type with "SCPA" branded on tires (Customer supplies "SCPA logo" mold to tire manufacturer)
Brake System:	SEALCO 110800 spring brake priority valve system and WABCO 2S/1M ABS system PHILLIPS glad hand 12-0081 and 12-0081, 3/8" blue air tube for control and 3/8" red for supply. HALDEX Goldseal T30/30, 2.5" stroke brake chamber. FUWA air tanks.
Electrical:	PHILLIPS mold seal wiring harness, Reserved PSI and GPS connector. (10-year warranty). OPTRONICS LED lights (amp connections for S/T/T lights and .180 bullets for others). The theft proof design used for 4" LED lighting. Meets or exceeds DOT and SAE standards.
Electrical Receptacle	PHILLIPS 16-724 aluminum alloy material
Document Holder:	PHILLIPS 16-802. Installed on roadside near crank handle.
Conspicuity tape:	"3M" brand. Installed per federal regulations
Painting:	Abrasive blast of all metal surfaces — not less than SA-2.5 to achieve clean bare steel. Surface will be coated with electrophoresis primer and true acrylic aliphatic urethane topcoat. Color BLUE RAL5010. Total thickness not less than 80µm after dry membrane. Coating supplier: NOROO (7-year warranty)
Marking:	Customer configuration (includes Decal, layout, VIN, nameplate)
Hubodometer:	NONE
Tire Inflation system:	NONE
Mud flaps:	NONE

CHASSIS PHOTOS



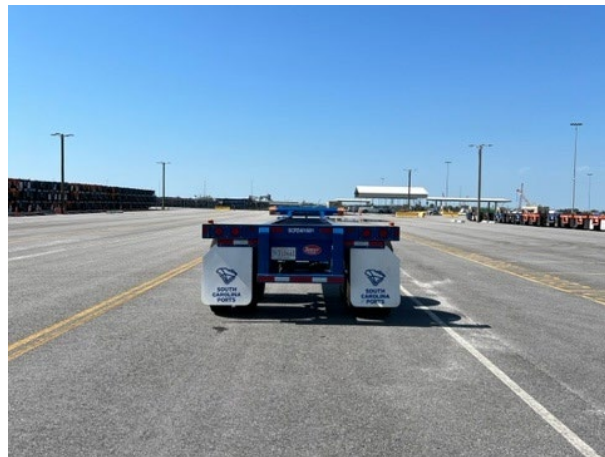
Typical Chassis – Side View



Typical Chassis – Front View



Typical Chassis – Side View



Typical Chassis – Back View

REQUEST FOR QUOTES
RFQ #CHS072423 – Surplus Chassis Sale

CHASSIS PHOTOS



Chassis Bundles – Not Strapped, Side View



Chassis Bundles – Not Strapped, Back View



Chassis Bundles – Strapped, Side View



Chassis Bundles – Strapped, Back View



REQUEST FOR QUOTES
RFQ #CHS072423 – Surplus Chassis Sale

BUYER QUOTE SHEET

Submitted By: _____

Date: _____

SCPA Surplus Chassis for Sale

Item	Description	Quantity of Chassis Owned by the SCPA	Total Quantity of Chassis Buyer will purchase from the SCPA	Unit Price	Extended Price (Quantity x Unit Price)	Proposed Export Date (Month / Year)
1	SCPA-owned surplus Chassis for Buyer to Purchase	2,310				

Company Name: _____

By: _____
(Name Printed/Typed) (Signature)

Company Address: _____
