

Traffic will be shifted to the two middle lanes. Various flagging operations may be present. Parking will be closed off to those directly impacted by work. See page 2.

McMillan Ave.

Various flagging operations will be present along N. Hobson.

Work Area

Travel Lanes

N. Hobson traffic will be shifted to the east side from Kilo St. to Pipefitter.

Traffic will be shifted to the new temporary road connecting Viaduct Rd. to Bainbridge Ave. (Page 3)

Detour Route

Spruill Ave.

N. Hobson Ave.

The outside lanes on Bainbridge Connector will be closed off for the remainder of the project duration. (Page 3)

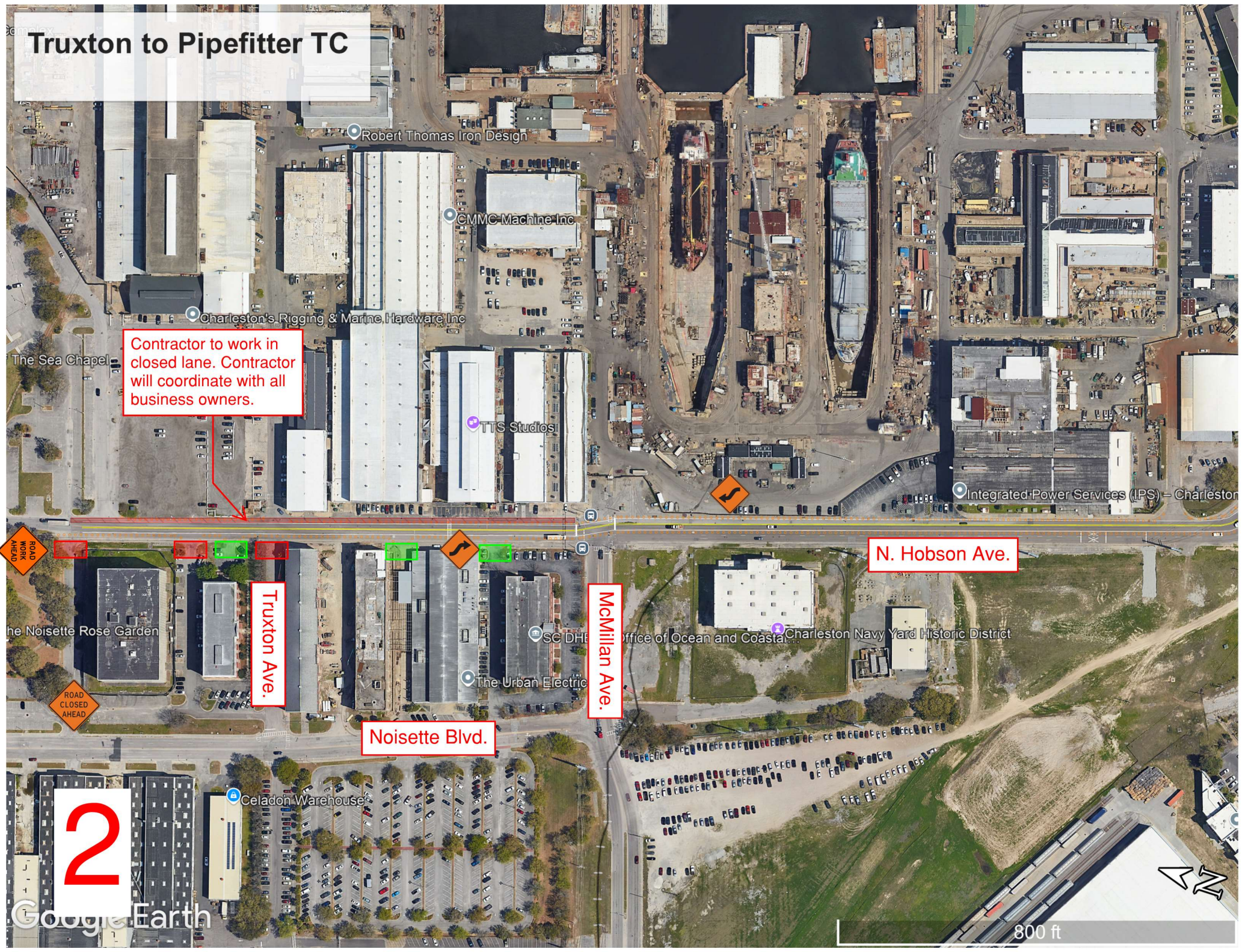
All driveways along N. Hobson to remain open during construction

Stromboli Ave.

Bainbridge Connector

Truxton to Pipefitter TC

Contractor to work in closed lane. Contractor will coordinate with all business owners.



Truxton Ave.

McMillan Ave.

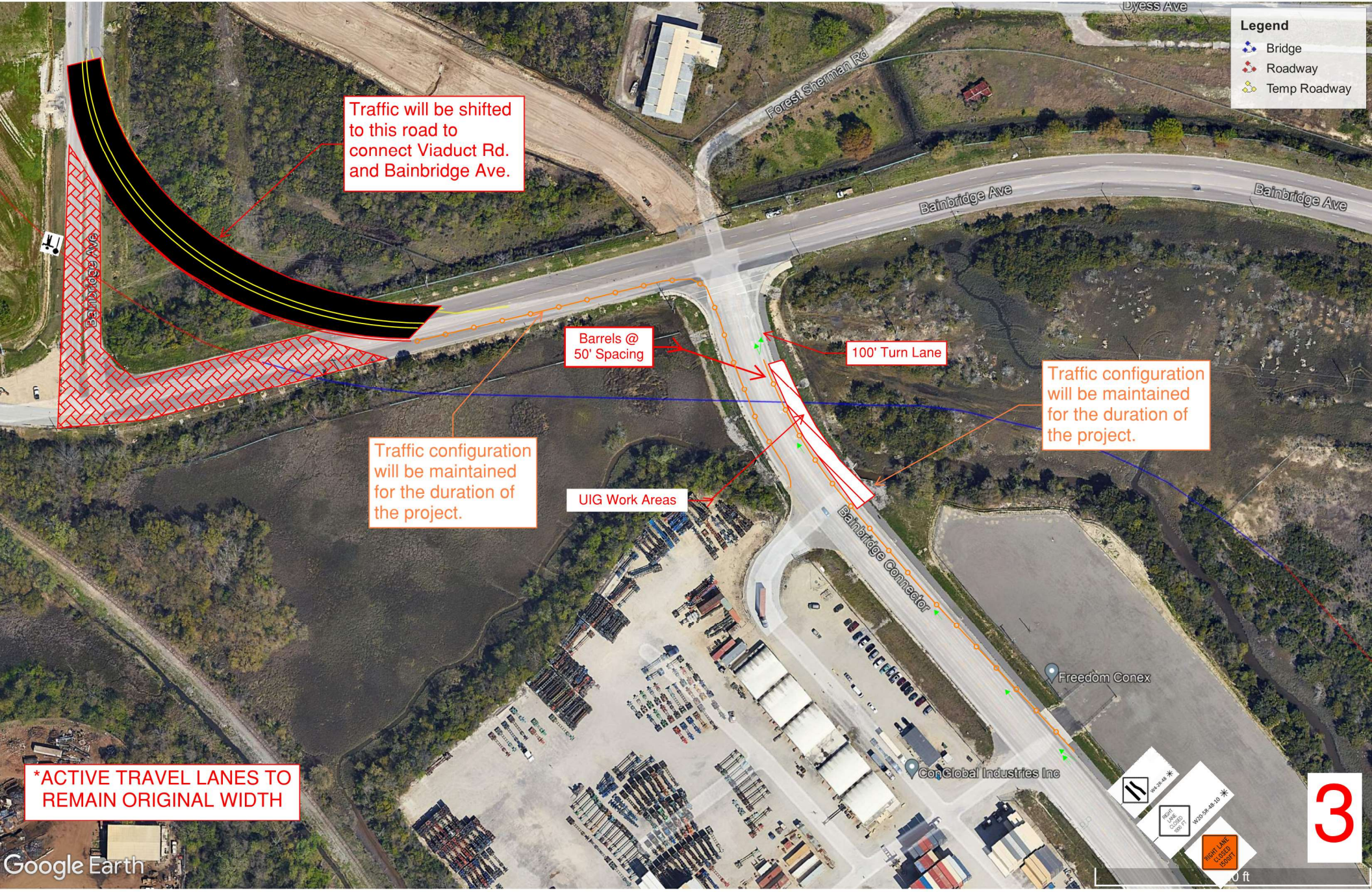
N. Hobson Ave.

Noisette Blvd.

2

Google Earth

800 ft



Legend

- Bridge
- Roadway
- Temp Roadway

Traffic will be shifted to this road to connect Viaduct Rd. and Bainbridge Ave.

Barrels @ 50' Spacing

100' Turn Lane

Traffic configuration will be maintained for the duration of the project.

Traffic configuration will be maintained for the duration of the project.

UIG Work Areas

*ACTIVE TRAVEL LANES TO REMAIN ORIGINAL WIDTH