

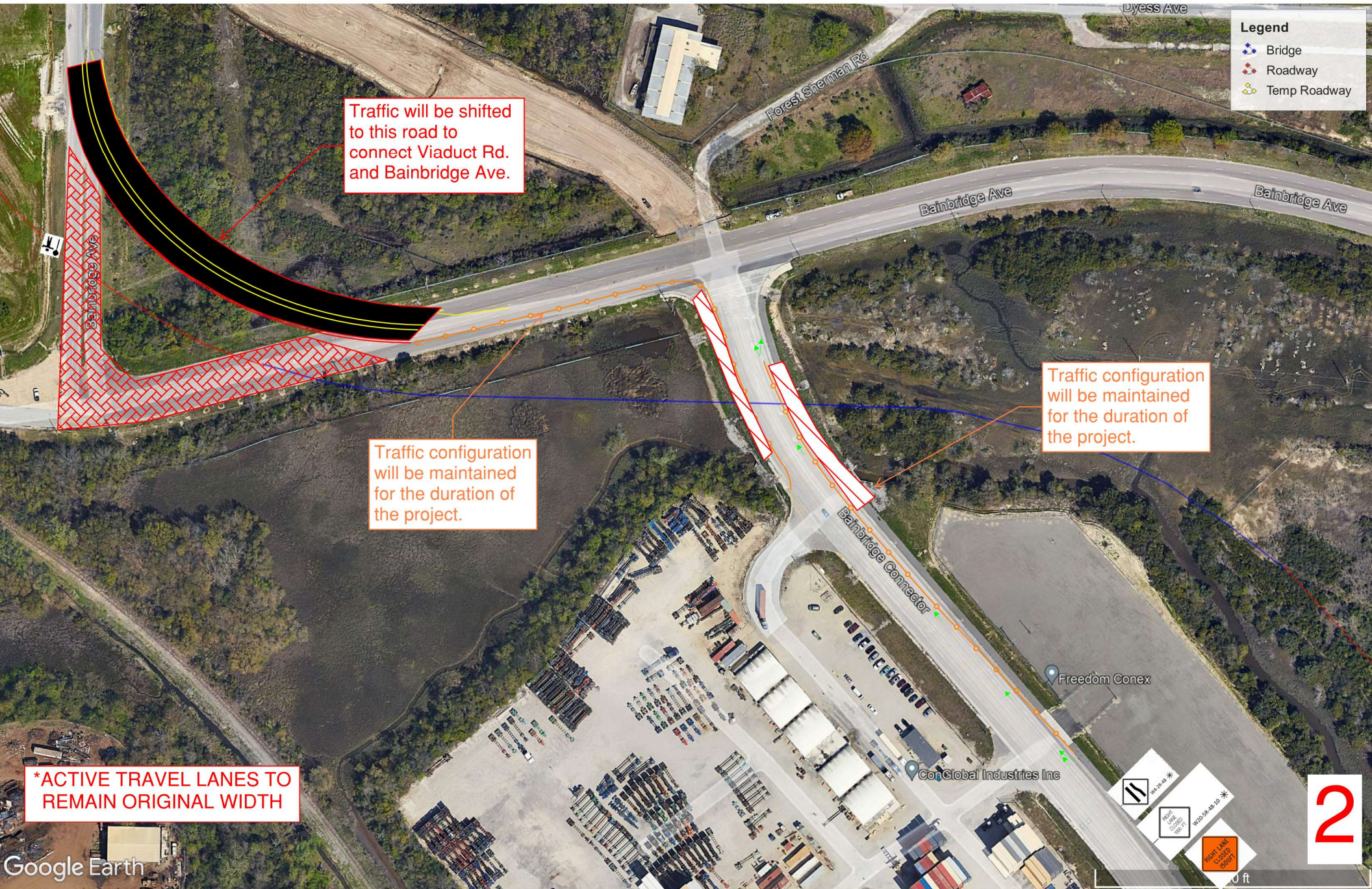
Traffic will continue to be shifted to the outside lanes on the east side. Various driveways will remain open. See page 4.

Construction at Spruill / Cosgrove. See Phase 1 details on page 3.

Traffic will be shifted to the new temporary road connecting Viaduct Rd. to Bainbridge Ave. (Page 2)

The outside lanes on Bainbridge Connector will be closed off for the remainder of the project duration. (Page 2)

All driveways along N. Hobson to remain open during construction



Legend

- Bridge
- Roadway
- Temp Roadway

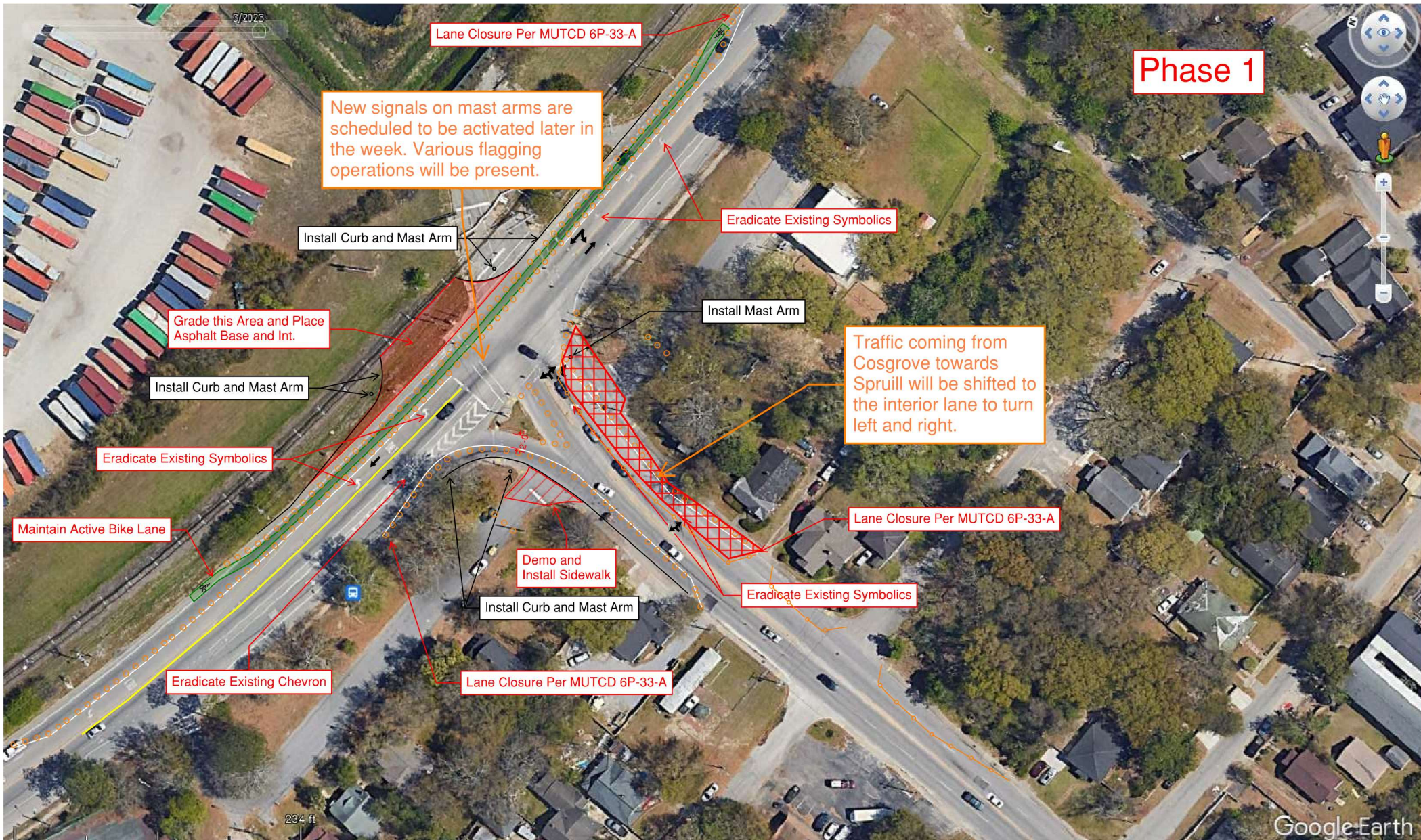
Traffic will be shifted to this road to connect Viaduct Rd. and Bainbridge Ave.

Traffic configuration will be maintained for the duration of the project.

Traffic configuration will be maintained for the duration of the project.

***ACTIVE TRAVEL LANES TO REMAIN ORIGINAL WIDTH**

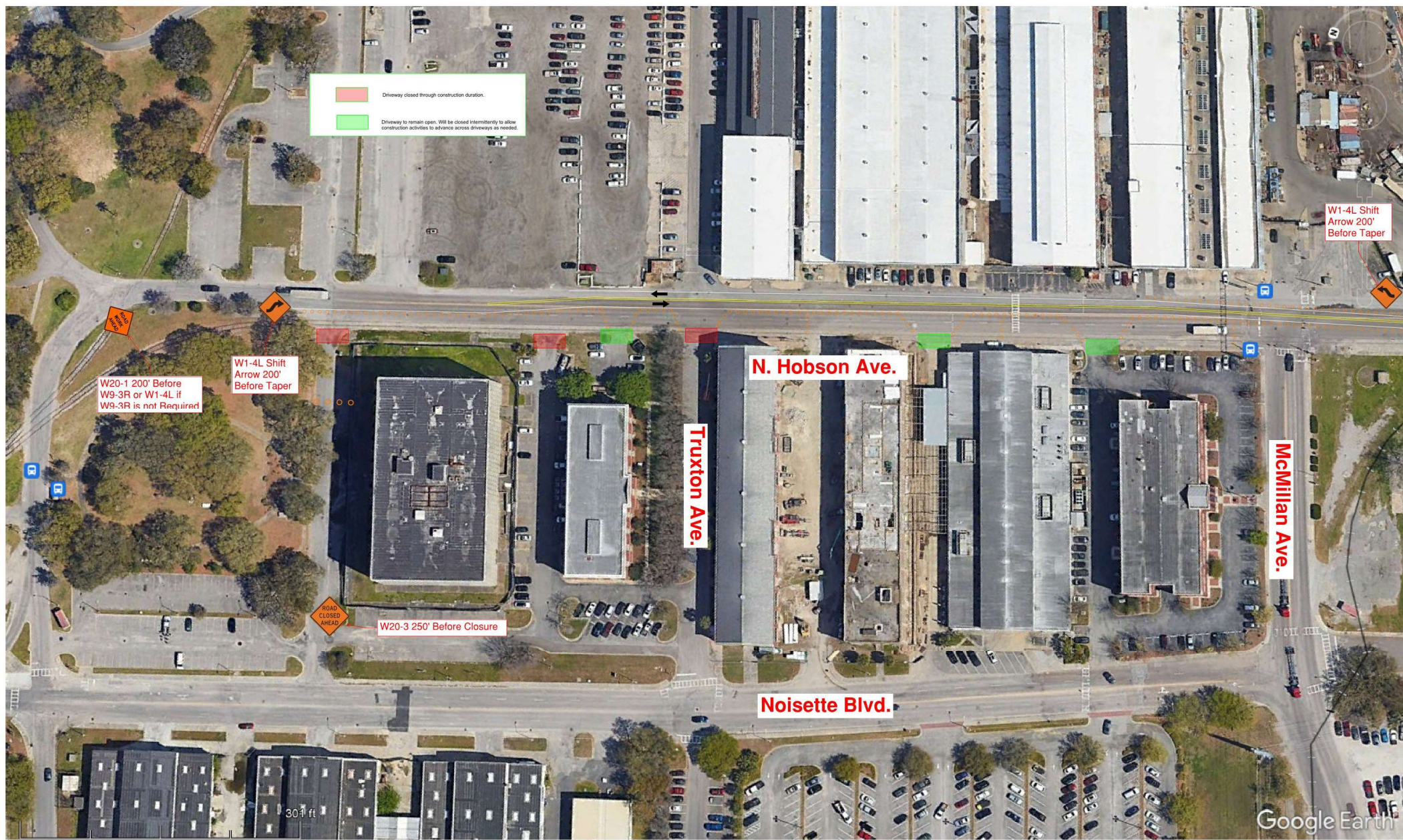
Right of Way
 Right Lane Closed Symbol
 Work Area



Phase 1

New signals on mast arms are scheduled to be activated later in the week. Various flagging operations will be present.

Traffic coming from Cosgrove towards Spruill will be shifted to the interior lane to turn left and right.



Driveway closed through construction duration.

Driveway to remain open. Will be closed intermittently to allow construction activities to advance across driveways as needed.

W1-4L Shift
Arrow 200'
Before Taper

W20-1 200' Before
W9-3R or W1-4L if
W9-3R is not Required

W1-4L Shift
Arrow 200'
Before Taper

W20-3 250' Before Closure

N. Hobson Ave.

Truxton Ave.

Noisette Blvd.

McMillian Ave.

30 ft

Google Earth